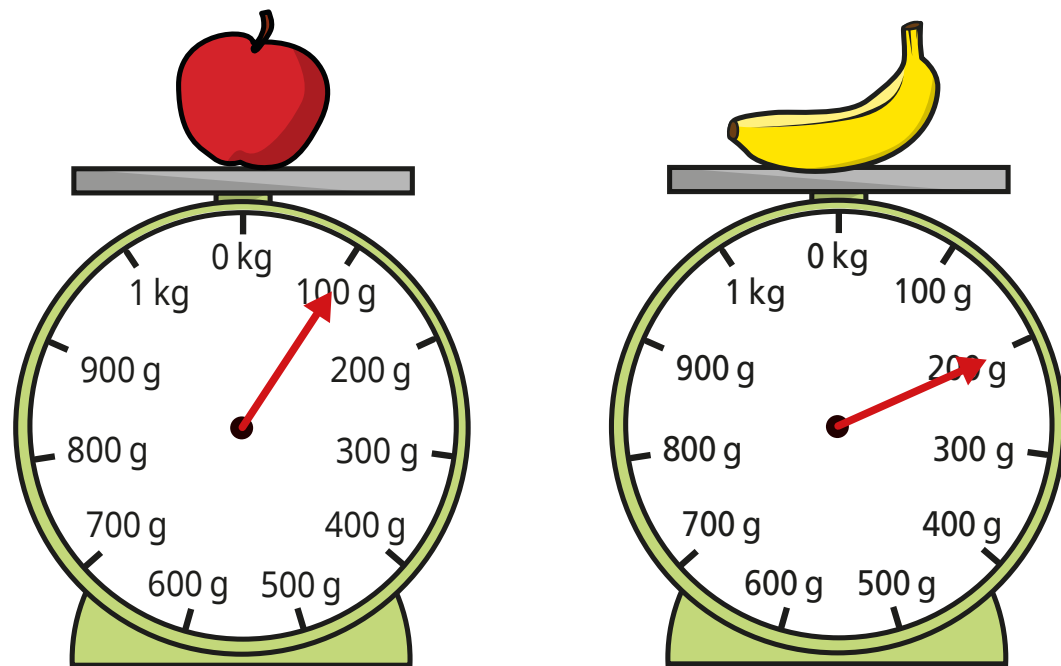


Add and subtract mass

- 1 Teddy is measuring the mass of some fruit.



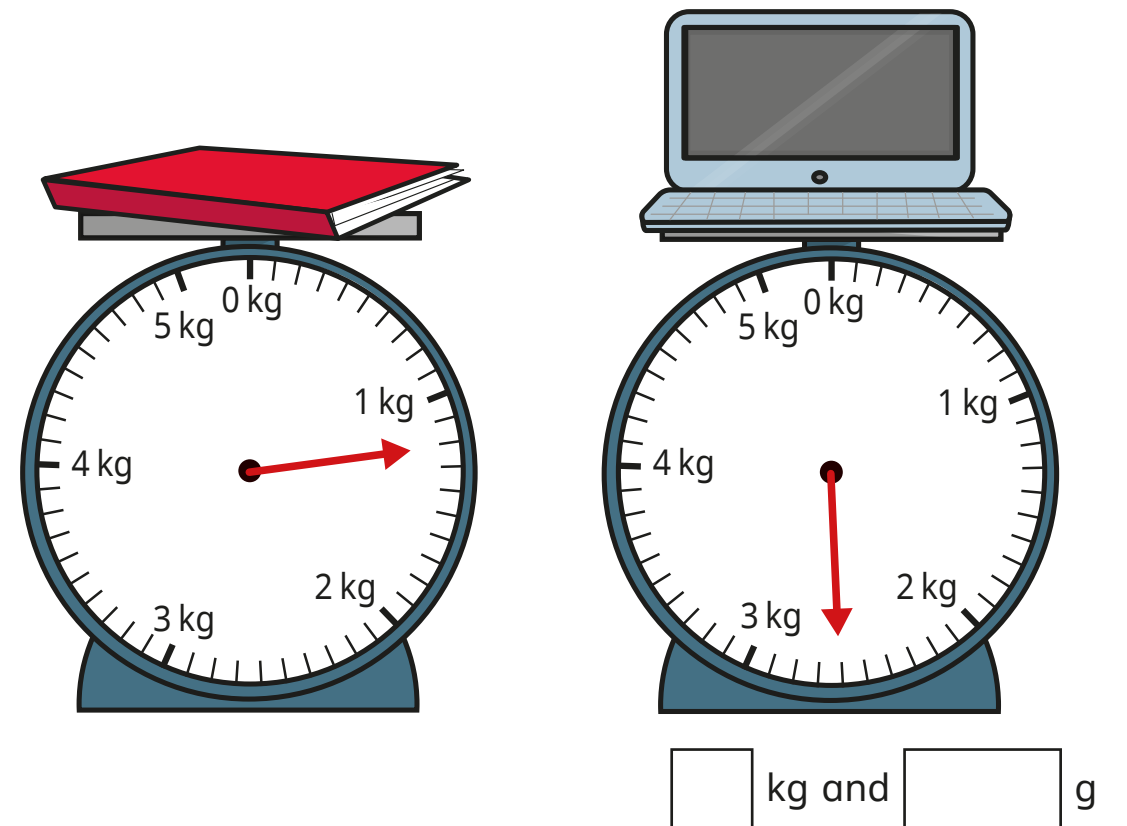
- a) What is the mass of the apple? g
- b) What is the mass of the banana? g
- c) What is the total mass of the apple and the banana? g

- 2 What is the total mass of the ingredients?

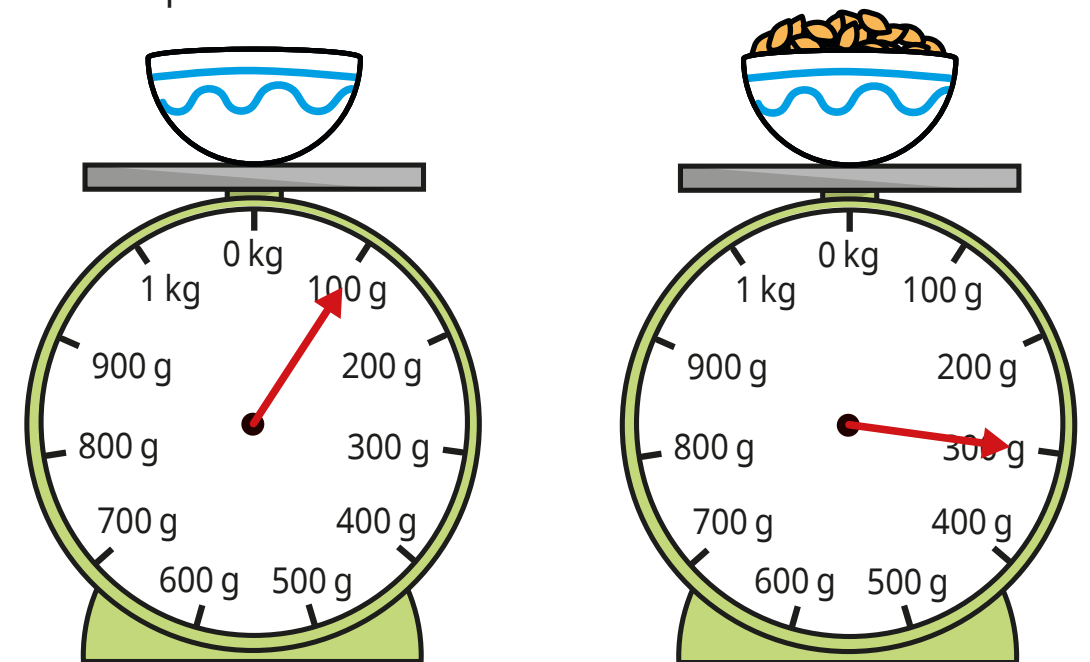


kg

- 3 What is the total mass of the book and the laptop?



- 4 Aisha is weighing out some cereal.
First she puts the bowl on the scales.
Then she pours in some cereal.



What is the mass of the **cereal** in the bowl?

g

- 5 The table shows the mass of a dog at 8 weeks old and at 12 weeks old.

Age	Mass
8 weeks	8 kg and 200 g
12 weeks	12 kg and 900 g

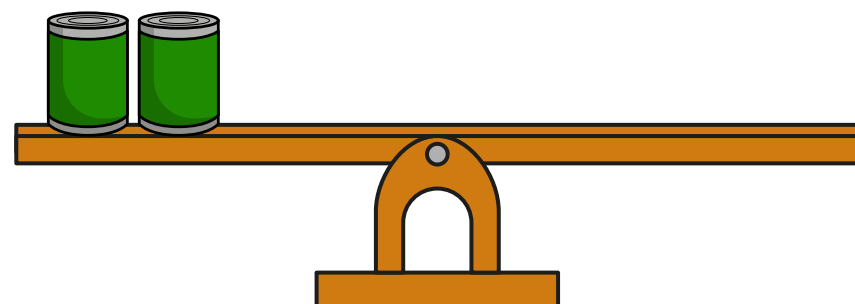
By how much has the mass of the dog increased between 8 and 12 weeks?

kg and g

- 6 The mass of a tin is 450 g.
The mass of a book is 300 g.



Draw books on the scales to balance the tins.



- 7 Complete the number sentences.

a) $1 \text{ kg } 250 \text{ g} + 5 \text{ kg } 300 \text{ g} = \text{ kg g}$

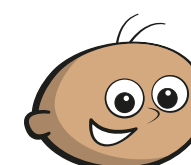
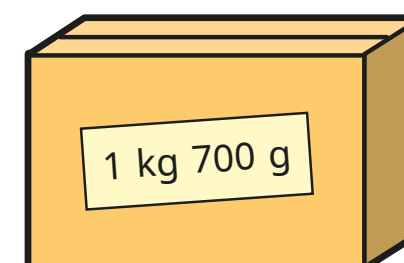
b) $3 \text{ kg } 450 \text{ g} + 8 \text{ kg } 100 \text{ g} = \text{ kg g}$

c) $15 \text{ kg } 960 \text{ g} - 11 \text{ kg } 260 \text{ g} = \text{ kg g}$

d) $36 \text{ kg } 317 \text{ g} - 20 \text{ kg } 200 \text{ g} = \text{ kg g}$

e) $1 \text{ kg} - \text{ g} = 200 \text{ g}$

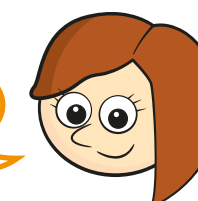
- 8 Tommy and Rosie are working out the total mass of the box and the suitcase.



The total mass is 5 kg and 1,000 g.

Tommy

Rosie



The total mass is 6 kg.

Who is correct?

Talk about it with a partner.